

MDT 569

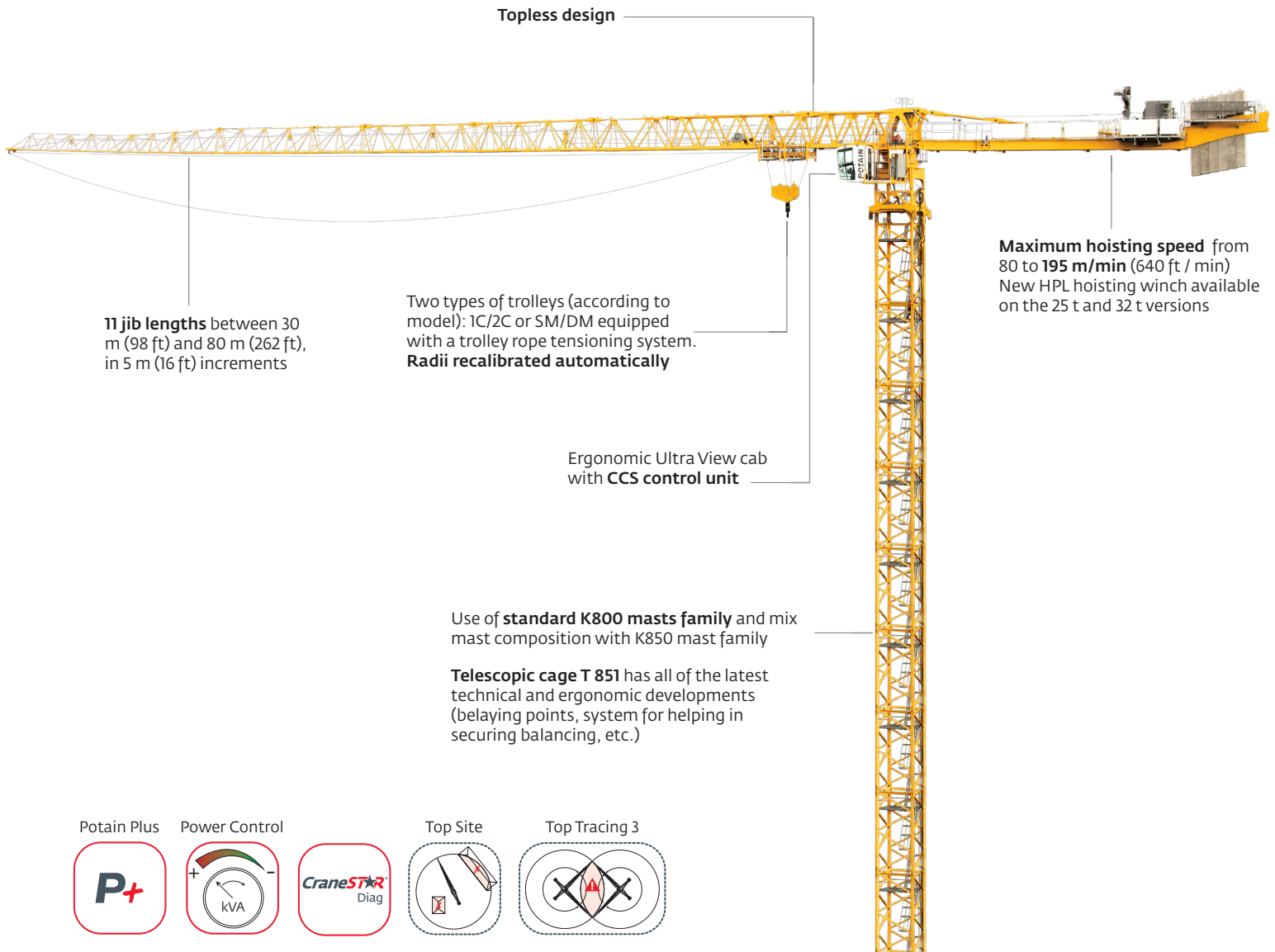
**Higher capacity.
Lower operating costs.**

Three versions available:

Max. Load: 20 t (22 USt), 25 t (27.6 USt) and 32 t (35.3 USt)

Max. Radius: 80 m (262 ft)

CCS control system



EXPERIENCE THE REVOLUTION AT:
WWW.MANITOWOC.COM

THE REVOLUTION IS
REAL
MANITOWOC CRANES



HIGH CAPACITY TOPLESS CRANE

Developed for large commercial projects and infrastructure jobs



Pre-fabricated components



Urban areas



Metro stations



Shipyards



Bridges



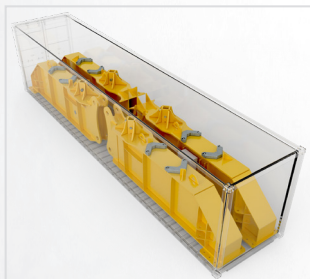
Mining sector

Groundbreaking performances for a Topless

- Specific design based on the Topless concept, with low space requirements to adapt to multi-crane jobsites
- High working heights obtained through the famous K800 mast family but as well proposed with mix mast composition K850 to reach very high HuH
- New cross ZY800 is available with this crane to offer a cross base solution optimized for K800 mast family
- Integrated CCS control system
 - Ergonomic control unit for crane driver comfort and productivity
 - Greater hoisting capacities generated by the Potain Plus function
 - Driving mode customization (limiting speed, sensitivity when operating, etc.)
 - Optimized maintenance with CraneSTAR Diag to carry out remote diagnostics

Optimized and economical transport

- Compact size and limited weight of each of the crane elements:
 - Foldable counter-jib
 - Towerhead and cab assembly transportable as one block
 - Integrated hanger for nesting jib sections during transport = less loads
 - Foldable platforms on the jib foot
 - Cross-shaped base ZY800 and ZY854 sized for a single container



- 9 standard containers to transport the crane's upper assembly with 80 m (262 ft) jib

Fast/efficient assembly and disassembly

- Simple and rapid unfolding of the counterweight tray
- Wired towerhead/cab assembly connected just once (no dismantling between sites)
- Cathead/jib foot is single element
- Modular jib without tie bars: several configurations are possible; lighter package weights with quick and easy handling
- Both cross-shaped bases comprised of a main girder and 2 half cross-girders connected easily using pins
- Handling of elements using designated sling points on each element and sling points with different forms for the handling of multiple parts (jib sections, towerhead/cab package, etc.) make lifting easier
- Tie-off points with specific shapes allow technicians to attach their safety harnesses easily during assembly
- Quick and easy commissioning, adjustment of load-limiting devices done in cab on the CCS screen

